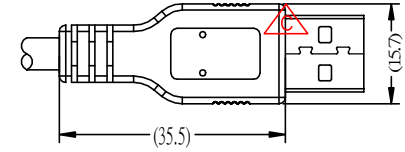
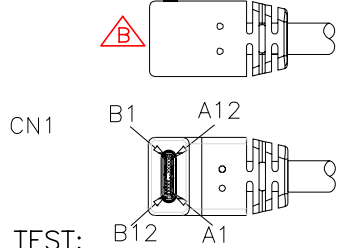
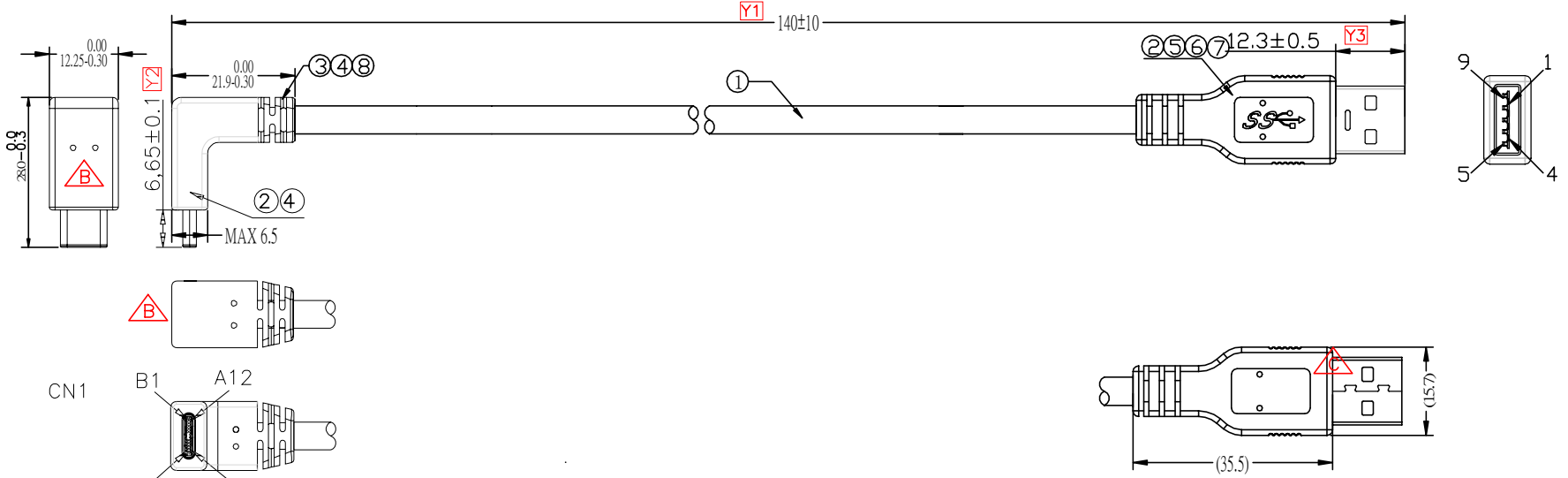


THIS DRAWING AND THE DATA DISCLOSED HEREIN OR HEREWITH IS NOT TO BE REPRODUCED USED OR DISCLOSED IN WHOLE OR IN PART TO ANYONE WITHOUT THE PERMISSION OF JESS-LINK PRODUCTS CO.,LTD.

CUSTOMER DRAWING

REV.	DESCRIPTION	MDF'D	APP'D	DATE
A	formulate(制定)	Curt	James	12/23/2018
B	Add pilot holes marking	Curt	James	01/09/2019
C	Revise USB AM integrate line and update carton printing content	Curt	James	02/20/2019



ELECTRONIC TEST:

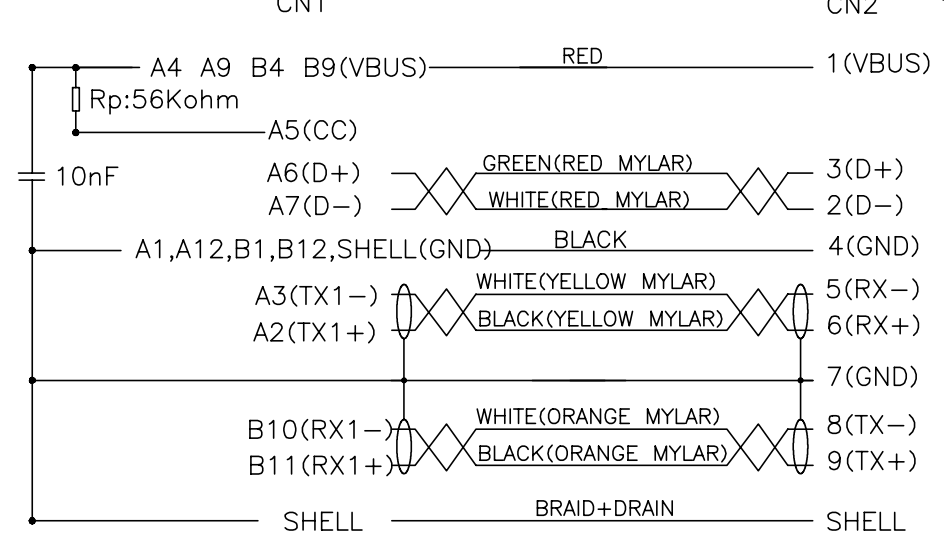
- A. OPEN/SHORT/INTERMITTENCE: 100%.
- B. CAPACITANCE DETECTION: 10NF±20% BETWEEN A1 AND A4
- C. RESISTANCE DETECTION: Rp=56Kohm±10 BETWEEN A4 AND A5
- D. HI-POT: 50V AC/0.01sec 50V DC/0.01sec
- E. INSULATION RESISTANCE: 10M OHM (MIN)
- F. CONDUCTIVE RESISTANCE: 3 OHM (MAX)

NOTES:

- 1. CHECK IMPORTANT SIZE Y1-Y3
- 2. ALL MATERIALS TO MEET RoHS

8	OUTER MOLDING	PVC 55P BLACK
7	OUTER MOLDING	PVC 45P BLACK
6	INNER MOLDING	PE
5	METAL CASE	SHELL SPCC
4	INNER MOLDING	PA
3	TYPE C Conn	USB TYPE C/M,INSULATOR BLACK,NICKEL PLATED SHELL, PIN GOLD PLATED 3u",PCB'A
2	TYPE A Conn	USB TYPE A/M,INSULATOR BLUE,NICKEL PLATED SHELL, PIN GOLD PLATED 15u"
1	CABLE	UL2725 (7/0.085TA*1PR+EAM)*2+7/0.08TA*1PR+19/0.10TA*2C+19/0.1TA*2 +Conductive film(PE)+B85% OD:4.0mm JACKET PVC COLOR:BLACK
ITEM	PART NAME	DESCRIPTION

PIN OUT



RoHS COMPLIANT	HALOGEN FREE	Unit : mm	PROJECTION					JPC JESS-LINK PRODUCTS CO., LTD.		
		GENERAL TOLERANCES: (UNLESS SPECIFIED)	D.R.	06/27/2018						
		0 = ±.30	Curt	06/27/2018	&TITLE_B		&PRODUCT_NO			
		0.0 = ±.20	Ray	06/27/2018					SCALE	SIZE
0.00 = ±.10	James	06/27/2018	&scale	A4	TNPT19024	C				
0.000 = ±.05										
0" = ± 1"										
0.0" = ±.50"										